



**FAT TUESDAY FEAST** — The appetizing aroma of pancakes and sausages wafted through fellowship hall at the Palmyra United Methodist Church in Palmyra on Tuesday, March 4, in preparation for the annual "Fat Tuesday" feast which celebrates the beginning of the Lenten season. Members of Palmyra Boy Scout Troop No. 14 and their leaders prepared and served the delicious — and very filling — food to a crowd of hungry and appreciative local residents. The evening's celebration continued in the church sanctuary with a Mardi Gras concert performed by the Palmyra-Eagle Community Band under the direction of director Ed Pierce. Pictured above, the band members — all decked out in colorful costumes — filled the church with toe-tapping, hand-clapping music by famous composers like Scott Joplin, Irving Berlin and George Gershwin. "Jim Neist and the Kettle Moraine Blues" also joined in the celebration to the delight of the audience. The evening of entertainment was full of fun and laughter in preparation for the Lenten season. "We encourage anyone interested in dusting off the old horn to join us," said Pierce. "Our rehearsals are on Monday evenings beginning at 7 in the Palmyra-Eagle High School band room."

## A GREAT BAND!

Editor, Daily Union: My compliments to the Palmyra-Eagle Community Band. They are great!

It had its beginning in 1993, a dream of one lady with only four people at their first practice. Now with their energetic, dedicated director, Mr. Ed Pierce of Fort Atkinson, it has about 45 members from surrounding communities.

They gave so much — practice every Monday night and per-

forming approximately ten concerts a year. The only pay is their love of music and the friendships they have made.

I attended the concert on Shrove Tuesday at the Palmyra United Methodist Church. It was wonderful, Mardi Gras music, band member's costumes and fun.

We should be so thankful for all of them. There is no charge to attend, just a free will offering. This helps provide music and other minor expenses.

Thanks Palmyra-Eagle band members, you are a talented group of musicians. — Jean Steinhoff, Palmyra.



# Band shares love of music with community

The Palmyra-Eagle Community Band, comprised of about 40 members from Palmyra, Eagle and the surrounding communities, has been performing for more than 20 years.

According to the band's website, the group had a humble beginning.

In January 1993, Alice Ventura sent a letter to the editor of the Palmyra-Eagle Enterprise suggesting the possibility of forming a community band in the Palmyra-Eagle area and urging interested people to attend a meeting at the Palmyra Town Hall. Four people attended: Clayton Clark, a former band director at PEHS; Glen Rehberg, PEMS band director who had volunteered to be the unpaid director; George Ventura, Palmyra Township Supervisor, and Alice Ventura.

This group listed possible instrumentalists, agreed to contact them by phone, and set a date (January 21, 1993) for the first rehearsal. That rehearsal brought four musicians – the two band directors, Alice Ventura and Judy Gapp.

The first concert was held on Flag Day, June 14, 1993, at Palmyra Village Park, featuring 12-14 members from Palmyra,

Eagle, Dousman, and East Troy and ranging in age from high school to retired seniors.

In August of that year the band played at the dedication of the Irvin L. Young Community Center and later in the fall, presented a concert at Fairhaven in Whitewater. The final concert of 1993 was a Christmas concert, held at the Irvin L. Young Center featuring 22 band members.

The band, according to the website, has had three directors: Glen Rehberg, the first year; Meghan Zimmerman, a student at University of Wisconsin-Whitewater who filled in the second summer; and Ed Pierce who has directed since that time. The band has always welcomed anyone who has an interest in joining and tryouts have never been required.

Funding for the band comes from various sources. Donations are sought on a yearly basis from the villages and towns of Eagle and Palmyra and from several local service organizations. Although there are no dues, band members are encouraged to contribute to the kitty at each rehearsal. Donations have also been made through supporters, concert

patrons and organizations that pay a fee for a requested performance. In 2007, the band was incorporated as a non-profit organization.

The band's summer concert series – offered free of charge – feature a wide range of music, including marches, show tunes, golden oldies, and themed shows. In addition to scheduled performances in the parks in Eagle and Palmyra, the band has traveled to Devil's Lake, Whitewater, Walworth, Oconomowoc, Concord, and East Troy. In recent years, several concerts have been held at Pal-

myra Methodist Church during the Easter and Christmas seasons.

The Palmyra-Eagle Community Band welcomes members of all ages from high school through seniors, and all ability levels. High school students can earn community service hours by being a member.

Rehearsals are held at 7 p.m., Monday nights in the PEHS band room except for the following dates: May 26, July 14 and Sept. 1.

For more information contact Connie Sukowski at [cjandptsukowski@gmail.com](mailto:cjandptsukowski@gmail.com)

## Community band concerts

The Palmyra-Eagle Community Band has the following 2014 concert dates confirmed:

Wednesday, April 9, 7 p.m. – Lenten Service at Palmyra United Methodist Church

Monday, May 19, 7 p.m. – Fairhaven in Whitewater  
Sunday, June 15, 10 a.m., Father's Day Fly-In at the Palmyra Airport

Sunday, July 13, 2 p.m., Eagle Historical Society's Ice Cream Social at Eagle Park

Monday, Aug. 4, 7

p.m., concert in the park at Village Park in Palmyra

Monday, Sept. 15, 5-8

p.m., spaghetti dinner at Palmyra United Methodist Church

Monday, Oct. 20, 7 p.m., Fairhaven in Whitewater

Saturday, Oct. 25, 1 p.m., Pumpkin Day at the Eagle Fire Department

Monday, Oct. 27, music turn-in pizza party, Palmyra-Eagle High School cafeteria

Sunday, Dec. 7, Christmas concert, Palmyra United Methodist Church

### Community band deserves praise

My compliments to the Palmyra-Eagle Community Band – they are great!

The band had its beginning in 1993, a dream of one lady with only four people at the first practice. Now, with the energetic, dedicated director Ed Pierce

of Fort Atkinson, the band has grown to about 45 members from the area.

They give so much of their time – practicing every Monday night and performing approximately 10 concerts each year with the only pay being sharing their love of music and the friendships they've made.

I attended a concert on Shrove Tuesday at Palmyra United Methodist Church. It was wonderful, featuring Mardi Gras music, the band members in costume and fun.

We should be so thankful for each one of them. There is no charge to attend, just a freewill offering to cover some of the band's expenses, including their music.

Thanks Palmyra-Eagle Community Band members! You are a talented group of musicians.

Jean Steinhoff,  
Palmyra





**SPECIAL LENTEN SERVICE** — Community churches, together with the Palmyra-Eagle Community Band, came together for a special Lenten worship service at the Palmyra United Methodist Church on Wednesday evening, April 9. The Rev. Rosy Mayorga of the Palmyra United Methodist Church, and the Rev. Steve Blyth of St. Matthew Lutheran Church, shared the fifth Wednesday Lenten Service in prayers and the gospel lesson, focused on John 18:15-30, the denials of Peter. Interspersed throughout the service the community band led the congregation in several hymns including the following old-time favorites: "The Old Rugged Cross," "My Hope is Built On Nothing Less," "Blessed Assurance" and "Jesus Christ is Risen Today." The band also played several special music pieces which included songs like "You Raised Me Up" and "Leaning on the Everlasting Arms," "Come Thou Fount of Every Blessing" and an "American Hymn Medley." "Throughout our nation, countless communities or city bands began as church bands," said Palmyra-Eagle Community Band Director Ed Pierce. "Musicians not only played in church balconies and choir lofts, but they could carry their music of praise out of doors to the church picnic and outdoor worship gatherings. "It is in the spirit of community faith and fellowship that the Palmyra-Eagle Band shares their God-given gifts of music with the community at this Lenten Service," he added. "Most final Lenten services are lightly attended, but this one was full." Pictured above are, from left to right — Pastor Steve Blyth, Pastor Rosy Mayorga, band director Ed Pierce and the Rev. Dwayne Goetch; Shown below is the Palmyra-Eagle Community Band.





# CREAMS,



# CAKES,



# & CABARETS

**The Eagle  
Historical  
Society &  
Dalmyra  
Eagle  
Community  
Band  
proudly  
present...**

**Our July  
Concert  
salute to  
summer  
heat and  
summer  
treats:**

**Creams,  
Cakes &  
Cabarets!**

**featuring  
vocalist  
"Kimbirdlee"**

**Sunday 2pm  
July 7, 2013  
Village Park  
CABARET,  
Eagle,  
Wisconsin**



# Today's Performers & Composers



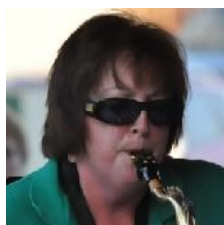
**"Kimbirdlee" (Kimberly Fadner).** Kimberly Fadner "Kimbirdlee" is a performing and visual artist who grew up in Hales Corners, WI and lived in Oakland, CA with her husband and 1-yr old son, "Jackrabbit" up until this summer. "The 40s: A Sentimental Journey" and her ongoing collaboration with PECB marks a special time for Kimbirdlee and her family as they spread their wings and make NYC their home in Fall, 2013. Kimbirdlee's natural gift as a singer was discovered as a young girl and she was in musicals with local Milwaukee-area theaters at an early age. Her first big roles were Amahl in "Amahl and the Night Visitors" and Marta in "Sound of Music" when she was only 7 years old. She was soon dubbed the singer of the family and sang for many special events, often with her father singing and playing along on guitar. Kimberly majored in Vocal Performance & Dance at Mills College in Oakland, CA and acting at the American Conservatory of Theater-SF. She appeared in West Coast productions including "It's a Grand Night for Singers" at Jarvis Conservatory in Napa, "Forever Broadway" at Herbst Theater, "Working: The Musical" at ACT-SF, Marin Shakespeare Company's "The Tempest", Berkeley Playhouse's "Cinderella: Enchanted", "Narnia", "Born and Raised" & "Seussical The Musical". She worked with the Berkeley Playhouse, and 142 Throckmorton as an actress, aerialist, director and teacher for several years. Her performance in "Seussical" earned her a Bay Area Theater Critics Circle Award nomination in 2012 and a guest performance at the Palace of Fine Arts in SF. Kimberly performs and records with her husband Jonathan Fadner and brother Matt Miller in The Kimbirdlee Fadner Trio & La Boheme. She is a soloist for various churches, as well. Here's to spreading joy and inspiration through music and the arts.



**Bob Miller and Jim Neist:** **Bob Miller** has been playing Baritone horn with the band since 1998, as well as providing occasional vocal support for selected favorites. Although a pediatrician and hospital administrator (retired) by profession, music has always been a part of Bob's life, whether with community bands and choruses, or at home with his children Matt and Kimberly. "Singing duets with Kimberly is always a joy!" he notes. Bob and Kim sing together on "Don't Sit Under the Apple Tree (With Anyone Else But Me)" on the CD. **Jim Neist** has been principal first trumpet with the Palmyra-Eagle Community Band for over a decade. His rendition of Andrews Sisters classic Boogie Woogie Bugle Boy on trumpet is a PECB concert favorite. He also leads the PECB feature ensemble the Kettle Moraine Blues, and he has orchestrated and arranged music both for that ensemble, and the larger band. His arrangement of Les Brown/Doris Day's "Sentimental Journey" is the final selection and provides the theme for our compact disc "The 1940s: A Sentimental Journey."



**The Kettle Moraine Blues:** The KMB, composed of Jim Neist--director and trumpet, Ellie Hawes--Saxophone, Gina Neist--Clarinet, Todd Kienitz--Trombone, Deb Gilbert--Keyboard, Jim Nelson--Tuba, and Nancy Campbell--Percussion, is the Palmyra-Eagle Community Band feature ensemble, performing at most concerts and events. They bring their unique blend of artistic virtuosity, musical risk-taking, and "Joe-Cool"-blues attitude to everything they play: from old standards like Basin Street Blues, and The Entertainer Theme, to less-familiar aural treats like the Hawaiian War Chant and The Theme for the Addams Family. Deb Gilbert and Gina Neist from the KMB also perform a duet on the PECB CD of the beautiful melody by Antonin Dvorak "Coming Home," from his Symphony No. 9, the "New World Symphony."



**Deb Gilbert and Ellie Hawes:** **Deb Gilbert** is the PECB lead flute player and KMB keyboardist, as well as our quick-change piccolo player for band favorites like Sousa's Stars & Stripes Forever. She plays the haunting flute solo composed by director Ennio Morricone for the 1986 film The Mission. Deb is also PECB music librarian, a role that allows her a break from her day job as bursar in the financial office at UW Whitewater. **Ellie Hawes** is PECB lead saxophone player, KMB saxophone, and frequent soloist on band sax features like Cool Blues for Saxophone, Saxsational, Rocka-My-Sax, and tonight's sultry jazz standard for saxophone, Harlem Nocturne. While Deb is a music librarian, Ellie is a librarian of every kind of media. You may recognize her as library assistant at Palmyra's Powers Memorial Library on Main Street!



**Ed Pierce, Director/Conductor/Vocalist.** Ed Pierce has directed the Palmyra-Eagle Community Band since 1994, the year after its founding. He is a 1971 graduate of WSU Whitewater with a B.S. in Music Education. In 2003 he was inducted into Wisconsin Band Masters Association., and in 2004 he was inducted into Phi Beta Mu Professional Band Directors Fraternity. He was Lebanon Band Director for 35 years, and 2011 winner of John Philip Sousa Foundation award for "Most Historic Community Band" with the Lebanon Band. He's been a guest conductor in 5 states, as well as soloist on four recordings of the 1st Brigade Band--Watertown, WI, an organization which performs on original antique instruments at historical events and community celebrations all over the state. Ed is an historian of military music and was President of Heritage Military Music Foundation for 9 years, Soloist for Time-Life Music Civil War Treasury Collection., and guest speaker and soloist for the Governors Reception for the Lincoln Bicentennial at the Executive Mansion in Madison, Wisconsin. Locally, he is founder of "The Harmony Cornet Band" for Old World Wisconsin and also directs specialty music programs for Old World. He directs the St. Paul's Lutheran School Band in Fort Atkinson, and has inspired many 5-8th grade students to strive for musical excellence, as well as inspiring us "old students" at the PECB!



**The Eagle, Wisconsin Historical Society**  
**& Palmyra Eagle Community Band**

*proudly present...*

**CREAMS, CAKES,  
AND CABARETS**

***"Mr. ED" PIERCE, DIRECTOR***

***"Kimbirdlee" (Kimberly Fadner), VOCALIST***

***Our Star Spangled Opening***

**The Great Race March.....Henry Mancini**  
**Fanfare & The Star Spangled Banner**

***ON WITH THE SHOW!***

**76 Trombones.....Meredith Willson**

76 Trombones is the highlight selection from Meredith Willson's 1957 musical "The Music Man." Professor Harold Hill uses the song to inspire the people of "River City" to dream big regarding their marching band. In Willson's hometown of Mason City, Iowa, 76 trombones hang from the ceiling of a building in "Music Man Square" in honor of their hometown composer.

**The Syncopated Clock.....Leroy Anderson**

Leroy Anderson was born of Swedish parents in Boston, studied languages at Harvard and almost became a linguist. Listeners and bands, including ours, are glad he switched to music in college! Anderson is famous for his Christmas piece Sleigh Ride, with its unmistakable percussion "whip crack" and horses "whinny" by muted trumpet. The PECB plays Sleigh Ride at every Christmas concert (including this year's on Sunday Dec 1, 2013), and it has also performed other Anderson selections, including The Irish Suite, Blue Tango, and A Christmas Festival. Anderson wrote The Syncopated Clock when he was a Captain and Chief of the US Army Scandinavian Department of Military Intelligence in 1942-1945. It was the theme for the CBS program "The Late Show" for more than 25 years.

**I'm Always Chasing Rainbows.....Harry Carroll**

The 1918 Vaudeville song "I'm Always Chasing Rainbows" has a melody based on Chopin's Fantasie-Impromptu. It has been performed by Charles Harrison (1918 hit version), Harry Fox, The Dolly Sisters, Judy Garland in "Ziegfeld Girls," Perry Como, Tony Bennett, Bing Crosby and dozens of other well-known artists.

**Kimberly Fadner – "KIMBIRDLEE" & THE KETTLE MORaine BLUES"**

***Can't Help Lovin' Dat Man Of Mine.....Arr. Jim Neist***

PECB composer and lead trumpet Jim Neist arranges the Kern & Hammerstein classic from the 1927 musical Showboat. "Can't help lovin' dat man" was made famous by torch singer Helen Morgan in the 1920s and later performed by artists as various as Ella Fitzgerald, Ava Gardner, Lena Horne, Sandi Patty, and Barbra Streisand.

***What I Did For Love\*.....Deb Gilbert, keyboard***  
***The Sun and I.....Arr .Jonathan Fadner***



## **Band**

### **Gabriel's Flute.....Ennio Morricone**

*Deb Gilbert, flute soloist*

Morricone's "Gabriel's Oboe" is the main theme for the 1986 film "The Mission," whose soundtrack was nominated for an Academy Award and won a Golden Globe for the best original film score of 1986. In the film, Jesuit Father Gabriel plays his oboe next to a huge South American waterfall, to befriend the Guarani natives and begin his missionary work among them. His oboe-playing saves Gabriel's life, but the Guarani chief is angry and breaks the oboe instead. Today, Deb Gilbert plays the original oboe melody on flute--hence our title "Gabriel's Flute"

### **Harlem Nocturne.....Earl Hagen**

*Ellie Hawes, sax soloist*

"Harlem Nocturne" is a jazz standard written by Earle Hagen and Dick Rogers in 1939. The song was adopted by bandleader Randy Brooks the next year as his theme song. "Harlem Nocturne" has been frequently recorded. Artists include the Glenn Miller Orchestra, Bill Haley and His Comets (performed live), The Lounge Lizards, Duke Ellington, Harry James, Earl Bostic, King Curtis, Anton Szandor LaVey, Herbie Fields, Willy Deville, David Sanborn, and guitarist Danny Gatton. The song peaked at #39 on the Billboard Hot 100 chart in 1966 for The Viscounts. The song begins 'Misterioso' and features an alto saxophone solo.

## **"Please welcome back KIMBIRDLEE"**

### **"Mein Herr Marquis" .....Arr. Jim Neist**

Adele, the maid, in Johann Strauss II's operetta Die Fledermaus sings this song, what is often called "The Laughing Song", to "Mein Herr Marquis" (Herr Eisenstein) because throughout the song she is laughing at the "Funny Situation" that is at the heart of this comic opera: her master at a masked ball unknowingly flirting with both his masked wife, pretending to be a Hungarian countess, and herself, his masked maid, pretending to be an actress. Even though the masked ball is a trap set by Eisenstein's nemesis "The Bat" (Fledermaus = "Flying Mouse"), and the main character ends up in jail temporarily, the ending is a happy one.

### **I Dreamed A Dream.....Adapted by Ed Pierce**

PECB director/composer/performer Ed Pierce adapts the Claude Michel Schonberg piece from the music Les Misérables that has been performed by numerous artists, most famously by Susan Boyle for the British reality tv series *Britain's Got Talent*. The album was the fastest selling debut album of all time in the UK and sold 700,000 copies in the first week in just the US, breaking the record for the highest debut ever for a solo female artist.

### **Moon River.....Henry Mancini**

### **Don't Sit Under the Apple Tree.....Lew Brown**

Duet with Kim's father, Bob Miller

## **Band**

### **Comedy Classics.....Paul Murtha**

*Happy Days, Beverly Hillbillies, The Brady Bunch, Bewitched, The Addams Family, I Love Lucy*

**Armed Forces On Parade + Our Director**



# Thanks to our Compact Disc Sponsors!

Medal of Honor



Distinguished Service Cross



**Ed Pierce & Nancy Campbell**

Silver Star



**Childhood Autism Treatment Team**

Purple Heart



**Heckel Tool & Mfg. Corp, Eagle WI**  
**Hilda Campbell**  
**True Value Hardware, Palmyra WI**  
**Zero Zone, North Prairie WI**  
**Lockwood & Associates Funeral Homes & Crematory**  
**Gwenn Zerull**  
**Deb and Bernie Gilbert**  
**Joyce Becker**  
**Faye & Derrayl Brugge**  
**Jim & Gina Neist, *In Memory of Albert Pitts and John Neist***  
**Val & Roger Cole**  
**Pat and Connie Sukowski**  
**Green Bay Packer Raffle**  
**Robert J. Miller**

Service Medal



Jean Cisler  
 Barbara D. Jatzak  
 Banco LLC  
 Cindy & Bill Holcomb  
 Eagle Lioness Club  
 Maney Motors, Palmyra WI  
 Old World Wisconsin, Eagle WI  
 Hot Rods Bar and Grill, Palmyra WI  
 White House of Music--Music Cafe, Mukwonago WI



## **FLUTE**

Faustina Jones  
Caitlin Gamble  
Deb Gilbert  
Kelley Haddon  
Erika White

## **CLARINET**

Faye Brugge  
Bonnie Kegler  
Warren Metzger  
Connie Sukowski

## **BASS CLARINET**

Gina Neist  
Kathy Sudbrink

## **SAXOPHONE**

Kristine Dexheimer  
Kim Griffin  
Ellie Hawes  
Kelly Isaacsen  
Yvonne Marie  
Paul Brady

## **TRUMPET**

Nancy Campbell  
Jeff Hawes  
Jim Neist  
Barb Sekula  
Jeff Teuteberg

## **FRENCH HORN**

Jody Garber  
Pattie Jaeger  
Wendy Lucht  
Gwenn Zerull

## **BARITONE**

Valerie Cole  
Bob Miller

## **TROMBONE**

Chelsea Kienitz  
Todd Kienitz  
Sonja Pluess  
Tom Stanley

## **TUBA**

Jim Nelson  
Wayne Craig  
Mike Rubingh

## **PERCUSSION**

Ethan Dexheimer  
Bernie Gilbert  
Melodie Haddon  
Elaine Ledrowski  
Margo Kurth





Palmyra-Eagle Community Band director Ed Pierce shows off the new PECB Compact Disc 'The 40's: A Sentimental Journey' and receives the Wisconsin Honor Flight Service Medallion (pictured above, at right) from Mark Grams, Dodge County Veterans Service Officer. The Stars and Stripes Honor Flight organization brings Wisconsin WWII and Korean War Veterans to Washington DC to be honored in a ceremony and to visit the National World War II Memorial. The Honor Flight Service Medallion is only given to special supporters of the Stars and Stripes Honor Flight. The Palmyra-Eagle Community Band's new CD "The 40's: A Sentimental Journey" was chosen as a special "mail call" item for these veterans on their Honor Flight. The Palmyra-Eagle Community Band has also been invited to General Mitchell Airport to play a reception for a returning Honor Flight on Saturday, September 21, 2013.

### Join us for our remaining 2013 public performances!

- **Jefferson Summer Concert, Friday July 19, 2013 at 7 p.m. (see web for loc)**
  - **Palmyra Park Concert, Monday August 5, 2013 at 7pm**
  - **PUMC Spaghetti Dinner, Monday September 16, 2013 at 5-7pm**
- **Honor Flight Reception, Saturday September 21 at ~7-9pm (see web for loc)**
  - **Annual Christmas Concert, Sunday December 1 at 7pm (PUMC)**

The Palmyra-Eagle Community Band would like to send special thanks to the Eagle, Wisconsin community for hosting us, the Eagle Historical Society and Elaine Ledrowski for sponsoring our concert, and to Kimbirdlee for her dazzling vocal contributions. For more on our featured artist today see: [www.kimbirdlee.net](http://www.kimbirdlee.net); [www.facebook.com/kimbirdlee](http://www.facebook.com/kimbirdlee), [www.kimbirdlee.blogspot.com](http://www.kimbirdlee.blogspot.com), and <http://www.youtube.com/user/kimbirdlee>

For questions, information, or to book a concert date, contact PECB President, Connie Sukowski at 262-485-2069 or e-mail: [cjandptsukowski@gmail.com](mailto:cjandptsukowski@gmail.com); or Director, Ed Pierce, at 920-563-5202 or email: [elpnac@compufort.com](mailto:elpnac@compufort.com). For more about the PECB see our website: **WWW.PECB.INFO**



CITY OF JEFFERSON, WI & THE  
PALMYRA-EAGLE COMMUNITY BAND  
*Present a Thursday Evening Summer....*

# CONCERT

IN  
THE

# PARK



**Thursday, July 3, 2014, 7:00-8:30 pm**  
**Rotary Waterfront Park, 301 S. Gardner**

# Band Members

## **FLUTE**

Caitlin Gamble  
Deb Gilbert  
Kelley Haddon  
Faustina Jones  
Erika White  
Callie Lindemeyer

## **CLARINET**

Faye Brugge  
Warren Metzger  
Dr. Jeff Olson  
Ken Olson  
Connie Sukowski  
Carol Thomas

## **BASS CLARINET**

Gina Neist  
Kathy Sudbrink

## **SAXOPHONE**

Kristine Dexheimer  
Ellie Hawes  
Kelly Isaacsen  
Yvonne Marie  
Melody Brady

## **FRENCH HORN**

Jody Garber  
Pattie Jaeger  
Wendy Lucht  
Gwenn Zerull

## **TRUMPET**

Nancy Campbell  
Sandi Hankowitz  
Jeff Hawes  
Ryan Kienitz  
Jim Neist  
Barb Sekula

## **BARITONE**

Valerie Cole  
Dusty Dusterhoef  
Bob Miller

## **TROMBONE**

Lisa Amacher  
Chelsea Kienitz  
Todd Kienitz  
Sonja Pluess  
Tom Stanley  
Newel Thomas

## **TUBA**

Jim Nelson  
Wayne Craig  
Mike Rubingh

## **PERCUSSION**

Bernie Gilbert  
Melodie Haddon  
Elaine Ledrowski  
Margo Kurth



# **Concert Program**

## **Starting with a Bang**

**The Great Race March**

**Fanfare & SSB**

**Old Time Rock & Roll (Guest Cowbell Artist)**

**Washington Post March**

## **The PECB Proudly Presents Our Resident Artist,**

**Kimbirdlee Fadner, Vocalist**

**Buttons & Bows**

**I Got the Sun In The Morning**

**There's No Business Like Show Business**

## **Going Down South**

**Camp Meetin'**

**Dixieland Struttin'**

**Pie In The Face Polka (Dr. Jeff Olson, Clarinet Soloist)**

## **Jim Neist Presents "The Kettle Moraine Blues"**

## **Old Favorites from our Compact Disc**

***The 1940s: A Sentimental Journey***

**In The Mood**

**Boogie Woogie Bugle Boy**

**Chattanooga Choo Choo**

**Der Fuehrers Face**

**Don't Sit Under the Apple Tree**

**(with Kimbirdlee & Dr. Bob Miller)**

## **Kimbirdlee Returns for an Encore**

**People Will Say We're In Love**

**They Say It's Wonderful**

**Surrey With the Fringe on Top**

# **"The Kettle Moraine Blues" Strikes Again**

## **Classics You Know and Love**

**On Wisconsin**

**Armed Forces On Parade**

**Stars & Stripes Forever**

**God Bless America**

**Our Director**



The Palmyra-Eagle Community Band, was formed in 1993 through the efforts of Band Manager, Alice Ventura. There were 4 musicians present at the first rehearsal. The first concert was presented on June 14<sup>th</sup>, Flag Day, in the village park. Over the years, the band has grown to over 40 members. Members are of all ages from retirees (some of whom had not played their instruments since their school days) to college and middle school students--from communities in our area to as far away as Madison. Under the direction of Ed Pierce of Ft. Atkinson, musical selections range from marches to show tunes, familiar popular melodies to classical.

We encourage anyone interested in dusting off the old horn to join us! Rehearsals are Monday evening, 7:00 pm, at the PEHS high school band room, 123 Burr Oak St, in Palmyra. Our schedule includes venues such as parks, retirement homes, churches, etc. throughout the spring, summer, and fall, and ends with a Christmas Concert the first Sunday in December. The band is all volunteer and supported by contributions from local businesses, civic groups, private donations and band members themselves.

In 2012-13 the band put out a WWII music CD "Music of the '40s: A Sentimental Journey" and performed for the Milwaukee Honor Flight return on Sept 21, 2013 at General Mitchell Airport. The CD was a welcoming gift for over 300 veterans from the state of Wisconsin! Copies of our CD are available for \$15 at concerts, or online at iTunes, Amazon, CDBaby, & other sites via the website.

*The PECB is an incorporated 501(c)3 non-profit, tax exempt organization. Donations and appreciations can be mailed to: Palmyra-Eagle Community Band, Inc., P.O. Box 215, Palmyra, WI 53156-0215 For questions, information, or to book a concert date, contact PECB President, Connie Sukowski at 262-485-2069 or e-mail: [cjandptsukowski@gmail.com](mailto:cjandptsukowski@gmail.com); or Director, Ed Pierce, at 920-563-5202 or email: [elp\\_nac@charter.net](mailto:elp_nac@charter.net). For performance dates or more information see our website at: [WWW.PECB.INFO](http://WWW.PECB.INFO).*



# Today's Performers



**Kimbirdlee** is a versatile vocalist known for her beautiful tone and incredible range that's topped off with blazing high notes. She is also a trained dancer, actress and artist. She is at home whether it's in Musical Theater, Cabaret, In Studio, On Film, Concerts, Dance Performances, Aerial Arts & Visual Art Exhibits. She's performed in a diverse range of musical and theater presentations from "Amahl and the Night Visitors" and "The Sound of Music" to Shakespeare's "The Tempest," "Cinderella : Enchanted," "Narnia," and "Seussical: The Musical."

She now lives in NYC where she recently moved with her husband Jonathan Fadner, son "Jackrabbit", and 2nd son on the way "Charliehorse". Her husband, a composer and often her collaborator, attends NYU/Tisch Graduate School for Musical Theater Composition, where she frequently guest sings. She earned her degree in Vocal Performance and Dance from Mills College, acting training from the American Conservatory of Theater SF and Aerial Dance training from the Kinetic Arts Center. She is a proud member of The Equity Membership Candidate Program (EMC). Kimbirdlee has received awards of excellence in the arts, including a Bay Area Theater Critics Award for Aerial Arts. She' has appeared in numerous theater productions with such companies as Berkeley Playhouse, Marin Shakespeare Co., ACT-SF, Herbst Theater, and NYU.

Kimbirdlee is the honored guest soloist with the Palmyra-Eagle Community Band in Wisconsin, the state in which she grew up. She appeared in the PECB's new CD "The 40s: A Sentimental Journey", which now holds the honor of being presented to the Honor Flights of our nation's veterans. This CD can be found on Amazon, CDBaby, Facebook & iTunes, along with her CD of original music called "Foolish Heart" .

Facebook: [www.facebook.com/kimbirdlee](http://www.facebook.com/kimbirdlee)

Website: [www.kimbirdlee.net](http://www.kimbirdlee.net)

Email: [kimbirdlee@gmail.com](mailto:kimbirdlee@gmail.com)



**Jim Neist** has been principal first trumpet with the Palmyra-Eagle Community Band for over a decade. His rendition of Andrews Sisters classic Boogie Woogie Bugle Boy on trumpet is a PECB concert favorite. He also leads the PECB feature ensemble the Kettle Moraine Blues, and he has orchestrated and arranged music both for that ensemble, and the larger band. His arrangement of Les Brown/Doris Day's "Sentimental Journey" is the final selection and provides the theme for our compact disc "The 1940s: A Sentimental Journey." More recently he has arranged for band Stan Jones 1948 cowboy legend song "Ghost Riders in the Sky" which has been sung by numerous vocalists including Gene Auty, Bing Crosby, Marty Robbins, and Johnny Cash. "Ghost Riders" will be featured by the PECB at the Eagle Historical Society Ice Cream Social & Western Extravaganza, 1-3pm Sunday July 13, 2014 Village Park, Eagle WI..



**The Kettle Moraine Blues:** The KMB, composed of Jim Neist--director and trumpet, Ellie Hawes--Saxophone, Gina Neist--Clarinet, Todd Kienitz--Trombone, Deb Gilbert--Keyboard, Jim Nelson--Tuba, and Nancy Campbell--Percussion, is the Palmyra-Eagle Community Band feature ensemble, performing at most concerts and events. They bring their unique blend of artistic virtuosity, musical risk-taking, and "Joe-Cool"-blues attitude to everything they play: from old standards like Basin Street Blues, and The Entertainer Theme, to less-familiar aural treats like the Hawaiian War Chant and The Theme for the Addams Family. Deb Gilbert and Gina Neist from the KMB also perform a duet on the PECB CD of the beautiful melody by Antonin Dvorak "Coming Home," from his Symphony No. 9, the "New World Symphony."



**Ed Pierce, Director/Conductor/Vocalist.** Ed Pierce has directed the Palmyra-Eagle Community Band since 1994, the year after its founding. He is a 1971 graduate of WSU Whitewater with a B.S. in Music Education. In 2003 he was inducted into Wisconsin Band Masters Association., and in 2004 he was inducted into Phi Beta Mu Professional Band Directors Fraternity. He was Lebanon Band Director for 35 years, and 2011 winner of John Philip Sousa Foundation award for "Most Historic Community Band" with the Lebanon Band. He's been a guest conductor in 5 states, as well as soloist on four recordings of the 1st Brigade Band--Watertown, WI, an organization which performs on original antique instruments at historical events and community celebrations all over the state. Ed is an historian of military music and was President of Heritage Military Music Foundation for 9 years, Soloist for Time-Life Music Civil War Treasury Collection., and guest speaker and soloist for the Governors Reception for the Lincoln Bicentennial at the Executive Mansion in Madison, Wisconsin. Locally, he is founder of "The Harmony Cornet Band " for Old World Wisconsin and also directs specialty music programs for Old World. He directs the St. Paul's Lutheran School Band in Fort Atkinson, and has inspired many 5-8th grade students to strive for musical excellence, as well as inspiring us "old students" at the PECB!



Nail on your Best Shoes &



# Saddle Up Pardner!



**Eagle-Historical Society  
and the Palmyra-Eagle  
Community Band  
Present a Summertime  
Ice-Cream Social &**

Starring our own  
“MR ED” Director Ed  
Pierce



**CONCERTS  
ROUNDUP!**

Sunday July 13, 2014 Village Park, Eagle WI, 1:00 pm Ice Cream  
Social and Demonstrations by Local Horse Enthusiasts,  
2:00 pm Band Concert with Classic Western Tunes.

**Featuring Guest  
Vocalist from  
NYC,  
Kimbirdlee!**





**The Ice Cream Social & Demonstrations start at 1:00pm**  
**Hippology-The Study of the Horse- Test your knowledge of horses.**

**Presenter Mary Alice Ruckwardt**  
Hippology Boards on loan from Waukesha County 4-H

**Therapeutic Riding Lesson Demonstration-**  
**Presenter- Wendy Konichek**

A horse and student will demonstrate how equine-oriented activities help facilitate the ability of individuals to reach their full potential by enhancing self-esteem and self-confidence.

**Miniature Horses** — Represent the program "Horses for Hope" for children and adults who are diagnosed with a terminal illness.

**Horse Power Healing Center** [www.horsepowerhealingcenter.com](http://www.horsepowerhealingcenter.com)

**An Icelandic Horse Demonstration -**  
**Presenter- Barb Riva**

Small, maneuverable and powerful the Icelandic horse is the oldest genetically pure example of naturally gaited horse in the world.

**Winterhorse Park Icelandics LLC** [www.winterhorse.com](http://www.winterhorse.com)

**Western Showmanship Demonstration —**  
**Presenter- Kati Prohaska**

Presenting your horse with confidence in a show ring.

**Kati's Corral from Suhm's Barnyard Creek Farm**  
<http://www.facebook.com/katiProhaskaEquineServices>

**Riding Lesson Demonstration-**  
**Presenter- Karen Brandl**

From Foals to finished show horses we love the American saddlebred!

**Rancho Del Rio** [www.ranchodelriosaddlebreds.com](http://www.ranchodelriosaddlebreds.com)

### **SPECIAL THANKS**

Jan and Bill Suhm, Suhmer's Saloon and Restaurant for advice and assistance in arranging demonstrations.  
Malinda Zettlemeier, Tasty Z's Grab and Go/Eagle BP for the donation of ice cream for this event.

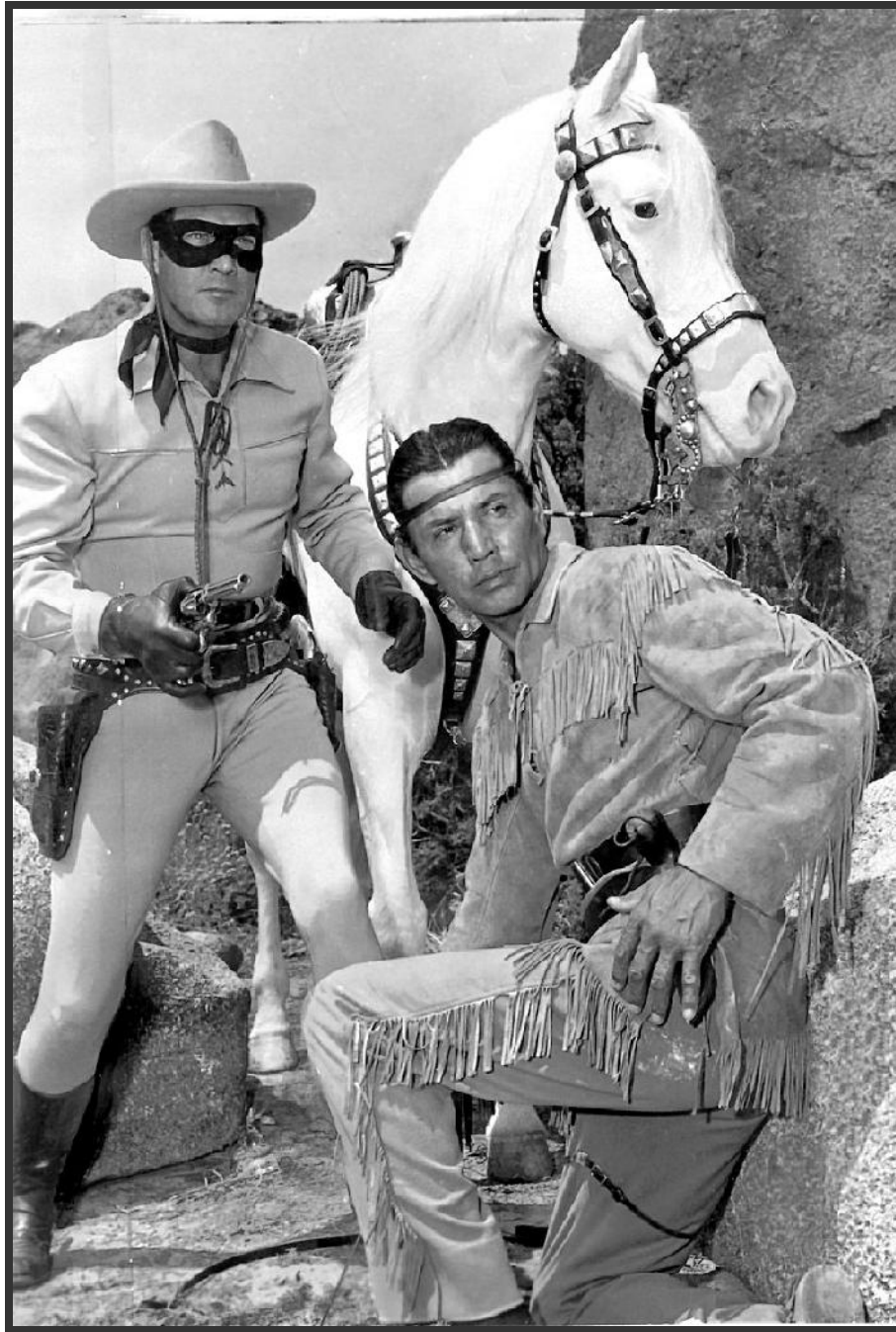
Elaine Ledrowski, Director, Eagle Historical Society

Ed Pierce, Director, Palmyra-Eagle Community Band & the PECB

The Palmyra-Eagle Community Band, was formed in 1993 through the efforts of Band Manager, Alice Ventura. There were 4 musicians present at the first rehearsal. The first concert was presented on June 14<sup>th</sup>, Flag Day, in the village park. Over the years, the band has grown to over 40 members. Members are of all ages from retirees (some of whom had not played their instruments since their school days) to college and middle school students--from communities in our area to as far away as Madison. Under the direction of Ed Pierce of Ft. Atkinson, musical selections range from marches to show tunes, familiar popular melodies to classical. We encourage anyone interested in dusting off the old horn to join us! Rehearsals are Monday evening, 7:00 pm, at the PEHS high school band room. Our schedule includes venues such as parks, retirement homes, churches, etc. throughout the spring and summer. The band is all volunteer and supported by contributions from local businesses, civic groups, private donations and the band members themselves. In 2012-13 the band put out a WWII music CD "Music of the '40s: A Sentimental Journey" and performed for the Milwaukee Honor Flight return on Sept 21, 2013 at General Mitchell Airport. Copies of our CD are available for \$15 at concerts, or online at iTunes, Amazon, CDBaby, & other sites via the website. The PECB is an incorporated 501(c)3 non-profit, tax exempt organization. Donations and appreciations can be mailed to: Palmyra-Eagle Community Band, Inc., P.O. Box 215, Palmyra, WI 53156-0215 For questions, information, or to book a concert date, contact PECB President, Connie Sukowski at 262-485-2069 or e-mail: [cjandptsukowski@gmail.com](mailto:cjandptsukowski@gmail.com); or Director, Ed Pierce, at 920-563-5202 or email: [elpnac@compufort.com](mailto:elpnac@compufort.com). For performance dates or more information see our website at [WWW.PECB.INFO](http://WWW.PECB.INFO).

**EAGLE HISTORICAL SOCIETY &  
PALMYRA-EAGLE COMMUNITY BAND** present...

***Hi-Yo Silver! What Do I See There on the Horizon, Tonto?!***



***A Horse Spectacular and Western Music Fandango!***

**Sunday, July 13, 2014, Village Park, Eagle WI. 1:00pm Ice  
Cream Social & Demonstrations by Local Horse Enthusiasts,  
2:00pm PECB Plays Classic Western Songs & Tunes**



# GENE AUTRY'S COWBOY CODE



1. The Cowboy must never shoot first, hit a smaller man, or take unfair advantage.
2. He must never go back on his word, or a trust confided in him.
3. He must always tell the truth.
4. He must be gentle with children, the elderly, and animals.
5. He must not advocate or possess racially or religiously intolerant ideas.
6. He must help people in distress.
7. He must be a good worker.
8. He must keep himself clean in thought, speech, action, and personal habits.
9. He must respect women, parents, and his nation's laws.
10. The Cowboy is a patriot.

*Gene Autry*

# Today's Performers



**Kimbirdlee** is a versatile vocalist known for her beautiful tone and incredible range that's topped off with blazing high notes. She is also a trained dancer, actress and artist. She is at home whether it's in Musical Theater, Cabaret, In Studio, On Film, Concerts, Dance Performances, Aerial Arts & Visual Art Exhibits. She's performed in a diverse range of musical and theater presentations from "Amahl and the Night Visitors" and "The Sound of Music" to Shakespeare's "The Tempest," "Cinderella : Enchanted," "Narnia," and "Seussical: The Musical."

She now lives in NYC where she recently moved with her husband Jonathan Fadner, son "Jackrabbit", and 2nd son on the way "Charliehorse". Her husband, a composer and often her collaborator, attends NYU/Tisch Graduate School for Musical Theater Composition, where she frequently guest sings. She earned her degree in Vocal Performance and Dance from Mills College, acting training from the American Conservatory of Theater SF and Aerial Dance training from the Kinetic Arts Center. She is a proud member of The Equity Membership Candidate Program (EMC). Kimbirdlee has received awards of excellence in the arts, including a Bay Area Theater Critics Award for Aerial Arts. She' has appeared in numerous theater productions with such companies as Berkeley Playhouse, Marin Shakespeare Co., ACT-SF, Herbst Theater, and NYU.

Kimbirdlee is the honored guest soloist with the Palmyra-Eagle Community Band in Wisconsin, the state in which she grew up. She appeared in the PECB's new CD "The 40s: A Sentimental Journey", which now holds the honor of being presented to the Honor Flights of our nation's veterans. This CD can be found on Amazon, CDBaby, Facebook & iTunes, along with her CD of original music called "Foolish Heart" .

Facebook: [www.facebook.com/kimbirdlee](http://www.facebook.com/kimbirdlee)

Website: [www.kimbirdlee.net](http://www.kimbirdlee.net)

Email: [kimbirdlee@gmail.com](mailto:kimbirdlee@gmail.com)



**Dr. Jeffrey Olson** is Associate Professor of Clarinet (Emeritus) at Valdosta State University, Valdosta, Georgia. He holds the degrees Doctor of Musical Arts and Master of Music from The Ohio State University, and Bachelor of Music from the University of Wisconsin - Madison. Dr. Olson has performed as Principal Clarinetist of the Valdosta Symphony Orchestra, the Albany (GA) Symphony Orchestra and the Central Florida Symphony Orchestra (Ocala). He has also performed as clarinetist with the ProMusica Chamber orchestra of Columbus, OH, the Roanoke (VA) Symphony and Opera Roanoke, and the Williamsport (PA) Symphony. He is also a founding member of the Blazerquintet, the VSU Faculty Wind Quintet. Dr. Olson has studied with James M. Pyne, Glenn H. Bowen, Russell Dagon and James Smith.



**Jim Neist** has been principal first trumpet with the Palmyra-Eagle Community Band for over a decade. His rendition of Andrews Sisters classic Boogie Woogie Bugle Boy on trumpet is a PECB concert favorite. He also leads the PECB feature ensemble the Kettle Moraine Blues, and he has orchestrated and arranged music both for that ensemble, and the larger band. His arrangement of Les Brown/Doris Day's "Sentimental Journey" is the final selection and provides the theme for our compact disc "The 1940s: A Sentimental Journey." More recently he has arranged for band Stan Jones 1948 cowboy legend song "Ghost Riders in the Sky" which has been sung by numerous vocalists including Gene Auty, Bing Crosby, Marty Robbins, and Johnny Cash. "Ghost Riders" will be featured by the PECB at the Eagle Historical Society Ice Cream Social & Western Extravaganza, 1-3pm Sunday July 13, 2014 Village Park, Eagle WI, along with Jim's *hot-off-the-presses* arrangement of "Happy Trails."



**Ed Pierce, Director/Conductor/Vocalist.** Ed Pierce has directed the Palmyra-Eagle Community Band since 1994, the year after its founding. He is a 1971 graduate of WSU Whitewater with a B.S. in Music Education. In 2003 he was inducted into Wisconsin Band Masters Association., and in 2004 he was inducted into Phi Beta Mu Professional Band Directors Fraternity. He was Lebanon Band Director for 35 years, and 2011 winner of John Philip Sousa Foundation award for "Most Historic Community Band" with the Lebanon Band. He's been a guest conductor in 5 states, as well as soloist on four recordings of the 1st Brigade Band--Watertown, WI, an organization which performs on original antique instruments at historical events and community celebrations all over the state. Ed is an historian of military music and was President of Heritage Military Music Foundation for 9 years, Soloist for Time-Life Music Civil War Treasury Collection., and guest speaker and soloist for the Governors Reception for the Lincoln Bicentennial at the Executive Mansion in Madison, Wisconsin. Locally, he is founder of "The Harmony Cornet Band " for Old World Wisconsin and also directs specialty music programs for Old World. He directs the St. Paul's Lutheran School Band in Fort Atkinson, and has inspired many 5-8th grade students to strive for musical excellence, as well as inspiring us "old students" at the PECB!



**The Kettle Moraine Blues:** The KMB, composed of Jim Neist--director and trumpet, Ellie Hawes--Saxophone, Gina Neist--Clarinet, Todd Kienitz--Trombone, Deb Gilbert--Keyboard, Jim Nelson--Tuba, and Nancy Campbell--Percussion, is the Palmyra-Eagle Community Band feature ensemble, performing at most concerts and events. They bring their unique blend of artistic virtuosity, musical risk-taking, and "Joe-Cool"-blues attitude to everything they play: from old standards like Basin Street Blues, and The Entertainer Theme, to less-familiar aural treats like the Hawaiian War Chant and The Theme for the Addams Family. Deb Gilbert and Gina Neist from the KMB also perform a duet on the PECB CD of the beautiful melody by Antonin Dvorak "Coming Home," from his Symphony No. 9, the "New World Symphony."



# **The Palmyra-Eagle Community Band**

## **2014**

### **FLUTE**

Deb Gilbert  
Kelley Haddon  
Faustina Jones  
Erika White  
Melody Brady  
Callie Lindemeyer

### **CLARINET**

Faye Brugge  
Warren Metzger  
Dr. Jeff Olson  
Ken Olson  
Connie Sukowski  
Carol Thomas

### **BASS CLARINET**

Gina Neist  
Kathy Sudbrink

### **SAXOPHONE**

Kristine Dexheimer  
Ellie Hawes  
Kelly Isaacsen  
Paul Brady

### **FRENCH HORN**

Jody Garber  
Pattie Jaeger  
Wendy Lucht  
Gwenn Zerull

### **TRUMPET**

Nancy Campbell  
Sandi Hankowitz  
Jeff Hawes  
Jim Neist  
Barb Sekula  
Ethan Dexheimer

### **BARITONE**

Valerie Cole  
Dusty Dusterhoef  
Bob Miller

### **TROMBONE**

Lisa Amacher  
Chelsea Kienitz  
Todd Kienitz  
Sonja Pluess  
Tom Stanley  
Newel Thomas

### **TUBA**

Jim Nelson  
Wayne Craig  
Mike Rubingh

### **PERCUSSION**

Bernie Gilbert  
Melodie Haddon  
Elaine Ledrowski  
Margo Kurth

## PECB CONCERT PROGRAM - Eagle WI, July 13, 2014

### **William Tell.....G.Rossini**

The William Tell Overture is the overture to the opera William Tell (original French title Guillaume Tell), whose music was composed by Gioachino Rossini. William Tell premiered in 1829 and was the last of Rossini's 39 operas. The Finale, often called the "March of the Swiss Soldiers" in English, is in E major like the Prelude, but is an ultra-dynamic galop heralded by trumpets and played by the full orchestra. It alludes to the final act, which recounts the Swiss soldiers' victorious battle to liberate their homeland from Austrian repression. Although there are no horses or cavalry charges in the opera, this segment is often used in popular media to denote galloping horses, a race, or a hero riding to the rescue. Its most famous use in that respect is as the theme music for The Lone Ranger, so famous that the term "intellectual" has been defined as "a man who can listen to the William Tell Overture without thinking of the Lone Ranger."

### **Cool Water.....Bob Nolan**

"Cool Water" is a song written in 1936 by Bob Nolan. It is about a man and his mule, Dan, as they wander through the desert dreaming of "Cool Water." All they find is a mirage, as the devil "spreads the burning sand with water." Bob Nolan (April 13, 1908 – June 16, 1980) was a Canadian-born American singer, songwriter, and actor. He was a founding member of the Sons of the Pioneers, and composer of numerous Country music and Western music songs, including the standards "Cool Water" and "Tumbling Tumbleweeds." He wrote dozens of famous western songs and is generally regarded as one of the finest Western songwriters of all time. As an actor and singer he appeared in at least 88 Western films, first for Columbia Pictures and later with cowboy stars Gene Autry and Roy Rogers.

**Bob Nolan**



### **The Rifleman Suite.....Herschel Burke Gilbert**

*(Arrangement through the courtesy of the late Dr. Nicholas J. Contorno, longtime Marquette University Director of Music )*

The Rifleman is an American Western television program starring Chuck Connors as rancher Lucas McCain and Johnny Crawford as his son, Mark McCain. It was set in the 1870s and 1880s in the town of North Fork, New Mexico Territory. The show was filmed in black-and-white, half-hour episodes. The Rifleman aired on ABC from September 30, 1958 to April 8, 1963 as a production of Four Star Television. It was one of the first prime time series on American television to show a widowed parent raising a child. More than 500 actors made guest appearances in more than 970 credited roles during the five-year run of the series.



Westerns were popular when The Rifleman premiered, and producers tried to find gimmicks to distinguish one show from another. The Rifleman's gimmick was a modified Winchester Model 1892 rifle, with a large ring lever drilled and tapped for a set screw. The lever design allowed him to cock the rifle by spinning it around his hand. In addition, the screw could be positioned to depress the trigger every time he worked the lever, allowing for rapid fire. Despite the anachronism of a John Browning-designed rifle appearing in a show set 12 years before it was designed, Connors demonstrated its rapid-fire action during the opening credits on North Fork's main street. Although the rifle may have appeared in every episode, it was not always fired; some plots did not require violent solutions (for example, one involving Mark's rigid new teacher). McCain attempts to solve as many problems as possible without having to resort to shooting, yet still manages to kill 120 villains over the show's five-year run. It is notable that McCain almost never carried a pistol. *Listen for the snare drum performing the Rifle Shots for the PECB in this energetic arrangement by Herschel Burke Gilbert.*



## **The PECB Welcomes Our Summer Artist-in-Residence, Kimbirdlee!**

### ***Buttons & Bows.....Jay Livingston***

"Buttons and Bows" is a popular song with music written by Jay Livingston with lyrics by Ray Evans.[1][2] The song was published in 1947. The song appeared in the Bob Hope and Jane Russell film, *The Paleface*, and won the Academy Award for Best Original Song. It was a vocal selection on many radio programs in late 1948. It was reprised in the sequel, "*Son of Paleface*" by Roy Rogers, Jane Russell and Bob Hope. The most popular version of the song was recorded by Dinah Shore in 1947 and reached the charts the following year. The singer laments her Western life where "cactus hurts her toes" and wants to return to city life with "French perfume that rocks the room" where "she'll stand out in buttons and bows."

### ***Surrey With the Fringe on the Top.....Rogers & Hammerstein***

"The Surrey with the Fringe on Top" is a show tune from the 1943 Rodgers and Hammerstein musical, *Oklahoma!* It is the second song of the show, following the opening number, "Oh What a Beautiful Mornin'." When Curly asks Laurey to go to the box social with him, he uses this song to persuade her by offering the prospect of taking her in a fancy rental carriage. In the movie version, the surrey (a four wheel covered carriage, in this case pulled by two horses) is initially seen in a brief fantasy sequence, but appears for real at the end when Curly and Laurey ride off in it to their honeymoon.

Versions of the song were recorded by Bing Crosby with Helen O'Connell, Nat King Cole, Mel Tormé, Ahmad Jamal, Ellis Marsalis, Tori Amos, Marlene Dietrich, Joshua Redman, Miles Davis, Julian "Cannonball" Adderley, Janis Siegel, Nancy LaMott, Sonny Rollins, Betty Carter, Blossom Dearie and McCoy Tyner, Wes Montgomery, Wynton Kelly, Johnny Smith, Peggy Lee, Julie Hamelin, Beverly Kenney, Mary Stallings, Stacey Kent, Vicky Carr,



Ray Brown, Barney Kessel, Joe Brown, The Hi-Lo's and the J. J. Johnson, Kai Winding Trombone Octet, Andy Williams, and King Crimson (as part of their track "Moonchild").

In the film *When Harry Met Sally...*, Harry and Sally sing a karaoke version of "The Surrey with the Fringe on Top".

An arrangement of the song is used as a segment of the area music for Main Street U.S.A in the Magic Kingdom park of Walt Disney World in Orlando, Florida.

### ***People Will Say We're In Love..... Rogers & Hammerstein***

"People Will Say We're In Love" is a show tune also from the Rodgers and Hammerstein musical *Oklahoma!* (1943). In the original Broadway production, the song was introduced by Alfred Drake & Joan Roberts. The other characters think, correctly, that Laurey (Joan Roberts) and Curly (Alfred Drake) are in love. In this song they warn each other not to behave indiscreetly, lest people misinterpret their intentions. Neither wants to admit to the other - or themselves - his or her true feelings. At the end of the musical the characters reprise the number after becoming engaged, saying "Let people say we're in love." This song has been covered by many people, both vocalists and solely instrumental versions. Three versions made the Top 40 charts: Bing Crosby (#2), Frank Sinatra (#3) and The Ink Spots (#11).

## **The Great American Horse!**

### **Ghost Riders In The Sky.....Jones / Neist**

"(Ghost) Riders in the Sky: A Cowboy Legend" is a cowboy-styled country/western song written in 1948 by noted American songwriter, Stan Jones. A number of versions were crossover hits on the pop charts in 1949. The ASCAP database lists the song as "Riders in the Sky" but the title has been written as "Ghost Riders", "Ghost Riders in the Sky", and "A Cowboy Legend". The song tells a folk tale of a cowboy who has a vision of red-eyed, steel-hooved cattle thundering across the sky, being chased by the spirits of damned cowboys. One warns him that if he does not change his ways, he will be doomed to join them, forever "trying to catch the Devil's herd across these endless skies". Jones said that he had been told the story when he was 12 years old by an old cowboy friend. The story resembles the northern European mythic Wild Hunt.

More than 50 performers have recorded versions of the song. Charting versions were recorded by The Outlaws, Vaughn Monroe ("Riders in the Sky" with orchestra and vocal quartet), which topped the Billboard magazine charts, by Bing Crosby (with the Ken Darby Singers), Frankie Laine, Burl Ives (two different versions), Marty Robbins, The Ramrods and Johnny Cash. Other recordings were made by Eddy Arnold, Peggy Lee (with the Jud Conlon Singers) and Spike Jones and his City Slickers. Gene Autry sang it in the 1949 movie, "Riders in the Sky."

The melody is based on the song "When Johnny Comes Marching Home." According to Robby Krieger, it inspired the classic Doors song "Riders on the Storm." It has also inspired other Rock and Heavy Metal versions!

### **Vaquero!.....Sammy Nestico**

The vaquero (Spanish pronunciation: [ba'kero], Portuguese: vaqueiro [va'kejru]) is a horse-mounted livestock herder of a tradition that originated on the Iberian Peninsula. Vaquero is a Spanish word for a herder of cattle. It derives from "vaca" for "cow". Today the vaquero is still a part of the doma vaquera, the Spanish tradition of working riding. The vaquero traditions developed in Mexico from methodology brought to Mesoamerica from Spain also became the foundation for the North American cowboy.

In the modern United States and Canada, remnants of two major and distinct vaquero traditions remain, known today as the "Texas" tradition and the "Spanish", "Vaquero", or "California" tradition. The popular "horse whisperer" style of natural horsemanship was originally developed by practitioners who were predominantly from California and the Northwestern states, clearly combining the attitudes and philosophy of the California vaquero with the equipment and outward look of the Texas cowboy. The natural horsemanship movement openly acknowledges much influence of the vaquero tradition.

The cowboys of the Great Basin still use the term "buckaroo", which may be a corruption of vaquero, to describe themselves and their tradition.

## **The American Cowboy**

**Back In The Saddle  
Again (The Cowboy  
Code).....Gene Autry**

**Read by "The Old  
Cowboy" Steve Wassam**



"Back in the Saddle Again" was the signature song of American cowboy entertainer Gene Autry. It was co-written by Autry with Ray Whitley and first released in 1939. The song was associated with Autry throughout his career and was used as the name of Autry's autobiography in 1976. In 1997, the song was inducted into the Grammy Hall of Fame. In 2001, a group of voters selected by the RIAA ranked "Back in the Saddle Again" the 98th best song of the Twentieth Century. Autry is also famed for his Cowboy Code, (displayed earlier in this program).

Ramon Adams, a Western historian, explains the Cowboy Code in his 1969 book, *The Cowman and His Code of Ethics*, saying, in part: "Back in the days when the cowman with his herds made a new frontier, there was no law on the range. Lack of written law made it necessary for him to frame some of his own, thus developing a rule of behavior which became known as the "Code of the West." These homespun laws, being merely a gentleman's agreement to certain rules of conduct for survival, were never written into statutes, but were respected everywhere on the range. Though the cowman might break every law of the territory, state and federal government, he took pride in upholding his own unwritten code. His failure to abide by it did not bring formal punishment, but the man who broke it became, more or less, a social outcast. His friends 'hazed him into the cutbacks' and he was subject to the punishment of the very code he had broken."

Autry's Cowboy Code is a shortened and cleaned-up version of the broader Cowboy Code tradition which includes less idealistic but just as practical wisdom such as " Never steal another man's horse. A horse thief pays with his life," "Never shoot a woman no matter what.," " Remove your guns before sitting at the dining table," " Never order anything weaker than whiskey.," " Always fill your whiskey glass to the brim," " Never try on another man's hat," " A cowboy doesn't talk much; he saves his breath for breathing.," and " Complain about the cooking and you become the cook."



**The Devil Went Down to Georgia.....Charlie Daniels**  
**Solo violin: Dale Wimer, Narrator: Steve Wassam**

"The Devil Went Down to Georgia" is a song written and performed by the Charlie Daniels Band and released on their 1979[1] album *Million Mile Reflections*. The song is a country music ballad about the Devil's failed attempt to "steal" a young man's soul through a fiddle-playing contest that involved enticing the young man's participation using a worldly prize. The song begins with a disappointed Devil arriving in Georgia, having stolen far fewer souls than expected, when he comes upon a fiddle-playing young man named Johnny. At that moment, Johnny happens to be playing his fiddle impressively "hot." Out of desperation, the Devil, who as it turns out also plays the fiddle, offers Johnny the wager which involves challenging the young man to a fiddle-playing contest. The Devil offers to give Johnny a golden fiddle if the young man plays better than he does; otherwise, the Devil will gain Johnny's soul. Although Johnny believes taking the Devil's bet might be a sin, he wagers his soul without fear, confidently boasting he is "the best that's ever been."

The Devil plays his fiddle first, to a contemporary, harsh rock music theme with the backing of demon musicians. When the Devil's performance ends, Johnny compliments him and responds by playing four songs (see the section that follows). Two are traditional songs of Appalachia -- "Fire on the Mountain" and



"Granny Does Your Dog Bite?" (the latter traditionally known as "Granny Will Your Dog Bite?"). The third is an unnamed square dance melody that includes the patter, "Chicken in the bread pan pickin' out dough." The last is a traditional American southern folk song "The House of the Rising Sun." The four songs are not performed but are only mentioned by reference. The Devil is impressed, admits defeat, and lays a golden fiddle at Johnny's feet. Johnny repeats his claim to be the best player ever and dares the Devil to a rematch in the future.

The original version of the song spent fourteen weeks on the Hot Country Singles charts in 1979, peaking at number 1 and holding the position for one week. It spent two weeks at a peak of number 3 on the Billboard Hot 100. Since it became available as download in the digital era, it has sold 1.9 million digital copies in the US as of October 2013. In June 1998, Epic Records re-released the song to country radio, but accidentally sent out the version in which the line "son of a b\*\*\*" was uncensored. This error was quickly corrected, and the song re-entered the country charts at number 62 for the chart dated June 20, 1998. It spent seven weeks on the chart and peaked at number 60.

## Home On The Range.....Traditional

"Home on the Range" is the state song of the American state of Kansas. Dr. Brewster M. Higley (1823–1911) originally wrote the words in a poem called "My Western Home" in the early 1870s in Smith County, Kansas. "Home on the Range" is often performed in programs and concerts of American patriotic music, and is frequently used in plays and films. These include the 1948 film *Mr. Blandings Builds His Dream House* (sung by both Cary Grant and Myrna Loy), the 1967 off-Broadway musical *You're a Good Man, Charlie Brown* (sung by the cast as a glee club rehearsal number), the 1980 film *Where the Buffalo Roam* (sung by Neil Young over the opening credits), the 2009 film *The Messenger* (sung by Willie Nelson over the closing credits).

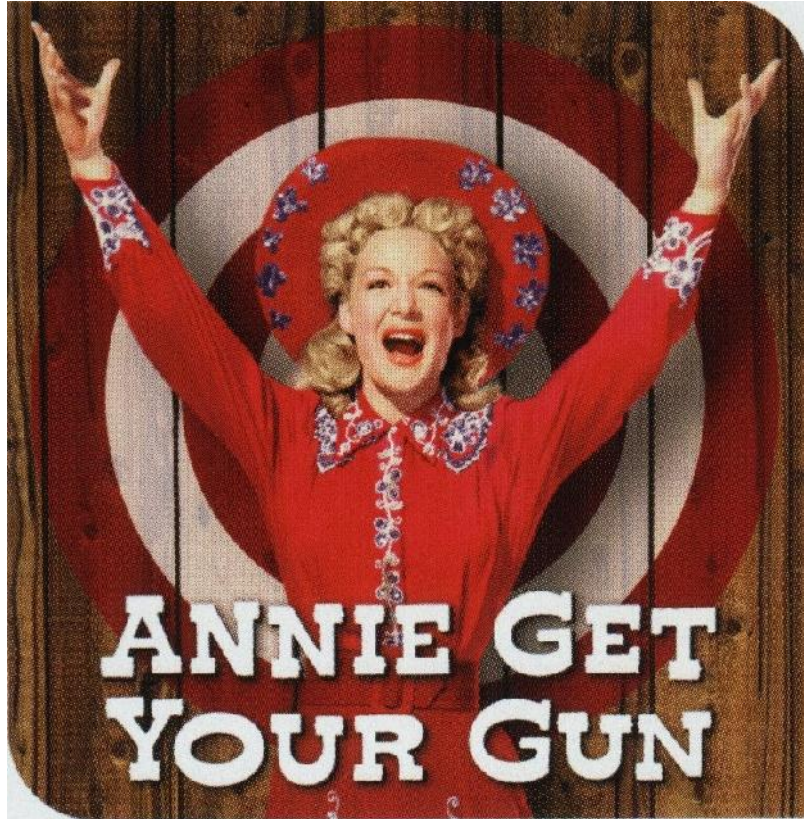
### *Jim Neist Presents the Western T.V. Edition of the K.M. Blues*



### Time to Watch the Top 20 Westerns Ever! (per <http://most-wanted-western-movies.com>)

<ol style="list-style-type: none"> <li>1. The Good, the Bad and the Ugly (1966)</li> <li>2. The Searchers (1956)</li> <li>3. High Noon (1952)</li> <li>4. Shane (1953)</li> <li>5. Unforgiven (1992)</li> <li>6. Red River (1948)</li> <li>7. Butch Cassidy and the Sundance Kid (1969)</li> <li>8. Stagecoach (1939)</li> <li>9. The Wild Bunch (1969)</li> <li>10. Dances with Wolves (1990)</li> </ol>	<ol style="list-style-type: none"> <li>11. McCabe &amp; Mrs. Miller (1971)</li> <li>12. The Man Who Shot Liberty Valance (1962)</li> <li>13. The Ox-Bow Incident (1943)</li> <li>14. The Outlaw Josey Wales (1976)</li> <li>15. Little Big Man (1970)</li> <li>16. Winchester '73 (1950)</li> <li>17. The Big Country (1958)</li> <li>18. My Darling Clementine (1946)</li> <li>19. Pat Garrett &amp; Billy the Kid (1973)</li> <li>20. Once Upon a Time in the West (1968)</li> </ol>
---	--

**The PECB once again welcomes Kimbirdlee! with Hits from Irving Berlin's**  
**"ANNIE GET YOUR GUN"**



***I Got the Sun In The Morning***  
***They Say It's Wonderful***  
***There's No Business Like Show Business***

"I Got the Sun in the Mornin' (and the Moon at Night)" is a song from the 1946 musical *Annie Get Your Gun*, written by Irving Berlin and originally performed by Ethel Merman. Other singers to have recorded the song include Betty Hutton (in the movie version of *Annie Get Your Gun*), Bernadette Peters, Doris Day, Judy Garland and June Christy with the Stan Kenton Orchestra.

"They Say It's Wonderful" was introduced by Ethel Merman and Ray Middleton. It has also been recorded by a wide range of vocalists from Perry Como (Billboard no. 27 in 1946), Frank Sinatra (1946), Sarah Vaughan - *Sarah Vaughan Sings Broadway: Great Songs from Hit Shows* (1958), Johnny Mathis - *Heavenly* (1959), Doris Day (1960), John Coltrane and Johnny Hartman (1963), Jimmy Scott - *Falling In Love Is Wonderful* (1963), Dionne Warwick - *I'll Never Fall in Love Again* (1970), Tony Bennett - *Bennett/Berlin* (1987), Judy Garland, Stacey Kent - *The Tender Trap* (1998), Bernadette Peters - *'Annie Get Your Gun' Revival Cast Recording* (1999), Sathima Bea Benjamin - *Musical Echoes* (2002) to Kirsten Dunst - *Spider-Man 3* (2007)

"There's No Business Like Show Business" is a slightly tongue-in-cheek salute to the glamour and excitement of a life in show business, sung in the musical by members of Buffalo Bill's Wild West Show in an attempt to persuade Annie Oakley to join the production. It is reprised three times in the musical. The song is also featured in the 1954 movie of the same name, where it is notably sung by Ethel Merman as the main musical number.



**Blazing Bones of the West.....Bernstein, Newman & Brooks.**  
*(Theme from The Magnificent 7, How The West Was Won & Blazing Saddles)*

**Happy Trails (To You Till We Meet Again).....Arr Jim Neist**

"Happy Trails" by Dale Evans Rogers, was the theme song for the 1940s and 1950s radio program and the 1950s television show starring Roy Rogers and Dale Evans Rogers, always sung over the end credits of the program. Happy Trails was released in 1952 as a 78 RPM and 45 RPM by Rogers and Evans with the Whippoorwills and Orchestra on RCA Victor Records. It was re-issued in 1957 as a 45 RPM record on RCA Victor/Bluebird.

Dale Evans' version of "Happy Trails" is a common good-bye song. Vallejo, California's theme park, Six Flags Discovery Kingdom, plays this song during park closure. The Kansas State University Marching Band often plays the song during the closing minutes of home football games as a send-off to defeated opponents. For most Broadway Shows and National Tours, when a cast member has his/her last performance, the entire company sings it for the departing cast member to wish them luck. It is mostly performed traditionally backstage before the curtain goes up or after the curtain call. After it gets sung, the departing cast member gives a thank you speech.

For the Palmyra-Eagle Community Band, as a goodbye song, it is a close second to The Sound of Music group chorus "So Long, Farewell, Auf Wiedersehn, Goodbye!" This version was arranged by our lead-trumpet and composer Jim Neist.

**SING ALONG**      *(PLEASE SING ALONG WITH THE BAND!!!)*

***"Happy Trails to you, until we meet again,  
happy trails to you, keep smilin' on till then,  
Who cares about the clouds when were together?  
Just sing a song and bring the sunny weather,  
Happy Trails to you, 'till we meet again."***



## **Pie in the Face Polka .....\*A special encore number by Dr. Jeff Olson**

The Pie in the Face Polka is a selection from the movie "The Great Race," also a source of "The Great Race March," a PECB patriotic concert favorite that often opens our programs.

The Great Race is a 1965 American slapstick comedy Technicolor film starring Jack Lemmon, Tony Curtis, and Natalie Wood, directed by Blake Edwards, written by Blake Edwards and Arthur A. Ross, and with music by Henry Mancini and cinematography by Russell Harlan. The supporting cast includes Peter Falk, Keenan Wynn, Arthur O'Connell and Vivian Vance. The movie cost US\$12 million, making it the most expensive comedy film at the time. It is noted for one scene that was promoted as "the greatest pie fight ever".

The Technicolor pie fight scene in the royal bakery was filmed over five days.[2] The first pastry thrown was part of a large cake decorated for the king's coronation. Following this was the throwing of 4,000 pies, the most pies ever filmed in a pie fight. The scene lasts four minutes and twenty seconds and cost US\$200,000 to shoot; US\$18,000 just for the pastry.

Colorful cream pies with fillings such as raspberry, strawberry, blueberry and lemon were used. For continuity between days of shooting, the actors were photographed at the end of each day and then made up the following morning to have the same colorful appearance, the same smears of pie crust and filling.

Edwards told the cast that a pie fight by itself is not funny, so to make it funny they would build tension by having the hero, dressed all in white, fail to get hit with any pies. He said, "The audience will start yearning for him to get it". Finally, the hero was to take a pie in the face at "just the right moment".

Shooting was halted while the actors took the weekend off. Over the weekend, the pie residue spoiled, all over the scenery. When the actors returned Monday morning, the pie filling smelled so bad that the building required a thorough cleaning and large fans to blow out the sour air. The missing pie residue was carefully recreated with more pies, and shooting resumed.



At first, the actors had fun with the pie fight assignment, but eventually the process grew wearisome and dangerous. Wood choked briefly on pie filling which hit her open mouth. Lemmon reported that he got knocked out a few times; he said, "a pie hitting you in the face feels like a ton of cement". At the end of shooting, when Edwards called "cut!", he was barraged with several hundred pies that members of the cast had hidden, waiting for the moment.

The pie fight scene paid homage to the early Mack Sennett practice of using a single thrown pie as comedic punctuation, but to a greater degree it was a celebration of classic movie pie fights such as Charlie Chaplin's Behind the Screen (1916), The Battle of the Century (1927) starring Stan Laurel and Oliver Hardy, and The Three Stooges' In the Sweet Pie and Pie from 1941. In his script for The Great Race Edwards called for a "Battle of the Century-style pie fight". Though Edwards used 4,000 pies over five days, many of these were used as set dressing for continuity. Laurel and Hardy used 3,000 pies in only one day of shooting, so more are seen flying through the air. Leonard Maltin compared The Great Race pie fight to The Battle of the Century and determined that Laurel and Hardy's pacing was far superior; that the more modern film suffered from an "incomplete understanding of slapstick" while the 1927 pie fight remains "one of the great scenes in all of screen comedy."

### ***In Conclusion: OUR DIRECTOR***





## Special Thanks To...

Mary Alice Ruckwardt , Presenter, for  
Hippology-The Study of the Horse- Test your knowledge of horses  
\*\*\*\*\*

Wendy Konichek, for  
Therapeutic Riding Lesson Demonstration  
\*\*\*\*\*

Horse Power Healing Center , [www.horsepowerhealingcenter.com](http://www.horsepowerhealingcenter.com) for  
Miniature Horses from the program "Horses for Hope," for children and adults  
who are diagnosed with a terminal illness.  
\*\*\*\*\*

Barb Riva, Winterhorse Park Icelandics LLC [www.winterhorse.com](http://www.winterhorse.com) for  
An Icelandic Horse Demonstration  
\*\*\*\*\*

Kati Prohaska, Kati's Corral from Suhm's Barnyard Creek Farm  
<http://www.facebook.com/katiProhaskaEquineServices>, for, Western Showmanship Demonstration  
\*\*\*\*\*

Karen Brandl, Rancho Del Rio [www.ranchodelriosaddlebreds.com](http://www.ranchodelriosaddlebreds.com), for  
Riding Lesson Demonstration  
\*\*\*\*\*

Jan and Bill Suhm, , Suhmer's Saloon and Restaurant, for  
Advice and assistance in arranging demonstrations.  
\*\*\*\*\*

Malinda Zettlemeier, Tasty Z's Grab and Go/Eagle BP, for  
Donation of ice cream for this event.  
\*\*\*\*\*

Elaine Ledrowski, Director, Eagle Historical Society, for  
Horse Demonstration Planning and Coordination  
\*\*\*\*\*

Ed Pierce, Director, Palmyra-Eagle Community Band & the PECB, for  
Music Coordination and Preparation



# ABOUT



# THE PECB

The Palmyra-Eagle Community Band, was formed in 1993 through the efforts of Band Manager, Alice Ventura. There were 4 musicians present at the first rehearsal. The first concert was presented on June 14<sup>th</sup>, Flag Day, in the village park. Over the years, the band has grown to over 40 members. Members are of all ages from retirees (some of whom had not played their instruments since their school days) to college and middle school students--from communities in our area to as far away as Madison. Under the direction of Ed Pierce of Ft. Atkinson, musical selections range from marches to show tunes, familiar popular melodies to classical.

We encourage anyone interested in dusting off the old horn to join us! Rehearsals are Monday evening, 7:00 pm, at the PEHS high school band room, 123 Burr Oak St, in Palmyra. Our schedule includes venues such as parks, retirement homes, churches, etc. throughout the spring, summer, and fall, and ends with a Christmas Concert the first Sunday in December. The band is all volunteer and supported by contributions from local businesses, civic groups, private donations and band members themselves.

In 2012-13 the band put out a WWII music CD "Music of the '40s: A Sentimental Journey" and performed for the Milwaukee Honor Flight return on Sept 21, 2013 at General Mitchell Airport. The CD was a welcoming gift for over 300 veterans from the state of Wisconsin! Copies of our CD are available for \$15 at concerts, or online at iTunes, Amazon, CDBaby, & other sites via the website.

*The PECB is an incorporated 501(c)3 non-profit, tax exempt organization. Donations and appreciations can be mailed to: Palmyra-Eagle Community Band, Inc., P.O. Box 215, Palmyra, WI 53156-0215 For questions, information, or to book a concert date, contact PECB President, Connie Sukowski at 262-485-2069 or e-mail: [cjandptsukowski@gmail.com](mailto:cjandptsukowski@gmail.com); or Director, Ed Pierce, at 920-563-5202 or email: [elp\\_nac@charter.net](mailto:elp_nac@charter.net). For performance dates or more information see our website at: [WWW.PECB.INFO](http://WWW.PECB.INFO). Additional thanks to Mike Rubingh for putting together this concert program, and to Wikipedia authors for supplying artist and song information.*

## Upcoming Concerts/Events (All Events are Free to the Public!)

Palmyra Final Summer Park Concert	Monday, August 4, 2014 7-8pm	Palmyra Village (aka Watertower) Park
Fine Arts Theatrical Tuesdays	Tuesday, August 19, 2014, 7-8:30pm	Nixon Park Band Shell, Park Ave (west of 340 Maple Ave) Hartland WI, 53029
PUMC Spaghetti Dinner & Free Concert	Monday, September 15, 2014, 5-6:30 (dinner), 7-8 (concert)	Palmyra United-Methodist Church, 122 N. 5th St., Palmyra WI 53156
Fairhaven Retirement Village	Monday, October 20, 2014, 7-8:00 pm	435 W. Starin Rd., Whitewater WI 53190
Eagle Firehouse Pumpkin Days	Saturday, October 25, 2014, ~1:00pm	Eagle Firehouse, 126 Main St/NN, downtown Eagle WI,
2014 Annual Christmas Concert	Sunday, December 7, 2014, 7-8:30pm	Palmyra United-Methodist Church, 122 N. 5th St., Palmyra WI 53156



**“Mark Your Calendars  
for Monday night  
August 5th!”**

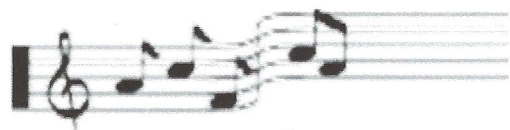
**7 p.m.**



**Come to Palmyra Village Park  
and enjoy the delightful**

**sounds of “Sizzlin’**

**Summer Swing”**



**with the**

**Palmyra Eagle  
Community Band!**



# PALMYRA-EAGLE COMMUNITY BAND

Broadway

Tuesday, August 19

Americana

Polkas

Nixon Park, 7 to 9 pm

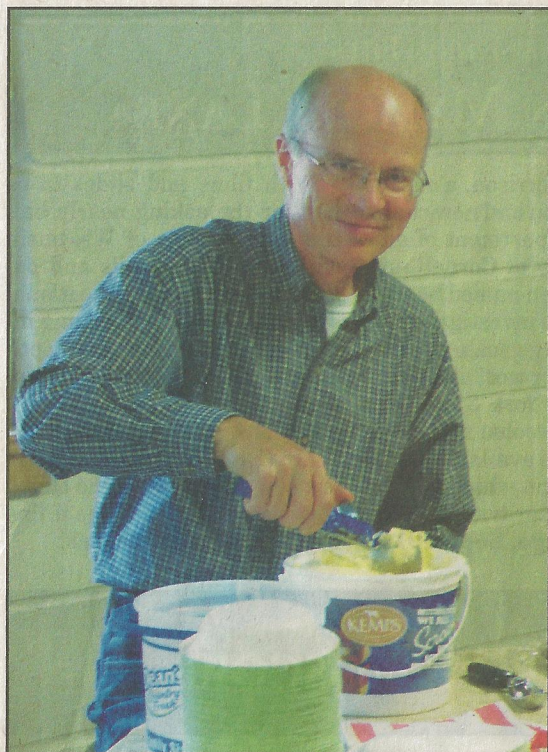
Sousa

***"The Palmyra-Eagle Community Band."*** Bandmaster Ed Pierce brings a program of Sousa, Broadway, Americana and of course....POLKAS. (a Wisconsin staple) This band has recorded "The 40's: A Sentimental Journey", a recording that has gone into Honor flight mail calls for over 350 Wisconsin World War 2 veterans. It is the recipient of the "Stars and Stripes Honor Flight medallion. Also featured will be the fun sounds of our own "Kettle Moraine Blues" under the direction of lead trumpeter Jim Neist, the bands own Dixieland combo. Come for a real slice of home town band music and relax with friends and family as the band puts a smile on your face and a tap in your toes! The program starts promptly at 7pm. Did we say it was free?

For more information please visit  
<http://pecb.info/> and <http://pecb.info/VideoClips.html>







**SPAGHETTI DINNER AND CONCERT** — The Palmyra Methodist Church Spaghetti Dinner and Concert was a huge success. The dinner was served in the church Fellowship Hall followed by an old-fashioned pep band concert held in the sanctuary on Monday evening, Sept. 15. The congregation served around 200 spaghetti dinners with all the trimmings, filling the fellowship hall with adults and children alike. Following the meal, the Palmyra/Eagle Community Band filled the church with music, clapping, laughter and dancing, which ended with a standing ovation. It was a delightful evening filled with delicious food, fellowship and hand-clapping music. Shown above left, Steve Moldenhauer served homemade brownies topped with ice cream for dessert; Above right, the Palmyra/Eagle Community Band played the first selection of the evening entitled "The Great Race March." It was the first of 15 tunes played throughout the concert; Directly at right, the audience presented the band with a standing ovation for an outstanding performance. — Photos by Ruth Ann Mueller.





PALMYRA-EAGLE COMMUNITY BAND

*Presents...*

# **Our 2014 Holiday Extravaganza!**



**Sunday, December 7, 2014, 7pm**  
**Palmyra United Methodist Church, 122 N 5th. St**

# Tonight 's Performers



**Kimbirdlee** is a versatile vocalist known for her beautiful tone and incredible range that's topped off with blazing high notes. She is also a trained dancer, actress and artist. She is at home whether it's in Musical Theater, Cabaret, In Studio, On Film, Concerts, Dance Performances, Aerial Arts & Visual Art Exhibits. She's performed in a diverse range of musical and theater presentations from "Amahl and the Night Visitors" and "The Sound of Music" to Shakespeare's "The Tempest," "Cinderella : Enchanted," "Narnia," and "Seussical: The Musical."

She now lives in NYC where she recently moved with her husband Jonathan Fadner, son "Jackrabbit", and new arrival 2nd son "Charliehorse". Her husband, a composer and often her collaborator, attends NYU/Tisch Graduate School for Musical Theater Composition, where she frequently guest sings. She earned her degree in Vocal Performance and Dance from Mills College, acting training from the American Conservatory of Theater SF and Aerial Dance training from the Kinetic Arts Center. She is a proud member of The Equity Membership Candidate Program (EMC). Kimbirdlee has received awards of excellence in the arts, including a Bay Area Theater Critics Award for Aerial Arts. She' has appeared in numerous theater productions with such companies as Berkeley Playhouse, Marin Shakespeare Co., ACT-SF, Herbst Theater, and NYU.

Kimbirdlee is the honored guest soloist with the Palmyra-Eagle Community Band in Wisconsin, the state in which she grew up. She appeared in the PECB's new CD "The 40s: A Sentimental Journey", which now holds the honor of being presented to the Honor Flights of our nation's veterans, and can be found on Amazon, CDBaby, Facebook & iTunes. These sites also feature Kimbirdlee's CD of original music called "Foolish Heart" . Kimbirdlee brings us several popular Christmas favorites tonight.

Facebook: [www.facebook.com/kimbirdlee](http://www.facebook.com/kimbirdlee)

Website: [www.kimbirdlee.net](http://www.kimbirdlee.net)

Email: [kimbirdlee@gmail.com](mailto:kimbirdlee@gmail.com)



**The Kettle Moraine Blues:** The KMB, composed of Jim Neist--director and trumpet, Ellie Hawes--Saxophone, Gina Neist--Clarinet, Todd Kienitz--Trombone, Deb Gilbert--Keyboard, Jim Nelson--Tuba, and Nancy Campbell--Percussion, is the Palmyra-Eagle Community Band feature ensemble, performing at most concerts and events. They bring their unique blend of artistic virtuosity, musical risk-taking, and "Joe-Cool"-blues attitude to everything they play: from old standards like Basin Street Blues, and The Entertainer Theme, to less-familiar aural treats like the Hawaiian War Chant and The Theme for the Addams Family. Deb Gilbert and Gina Neist from the KMB also perform a duet on the PECB CD of the beautiful melody by Antonin Dvorak "Coming Home," from his Symphony No. 9, the "New World Symphony." --a melody that takes on an interesting Christmastime permutation tonight, as the band plays "Goin Home for the Holidays". Tonight the KMB invites the band (and you) to join in their soulful rendition of Leonard Cohen's "Hallelujah".



**Ed Pierce, Director/Conductor/Vocalist.** Ed Pierce has directed the Palmyra-Eagle Community Band since 1994, the year after its founding. He is a 1971 graduate of WSU Whitewater with a B.S. in Music Education. In 2003 he was inducted into Wisconsin Band Masters Association., and in 2004 he was inducted into Phi Beta Mu Professional Band Directors Fraternity. He was Lebanon Band Director for 35 years, and 2011 winner of John Philip Sousa Foundation award for "Most Historic Community Band" with the Lebanon Band. He's been a guest conductor in 5 states, as well as soloist on four recordings of the 1st Brigade Band--Watertown, WI, an organization which performs on original antique instruments at historical events and community celebrations all over the state. Ed is an historian of military music and was President of Heritage Military Music Foundation for 9 years, Soloist for Time-Life Music Civil War Treasury Collection and guest speaker and soloist for the Governors Reception for the Lincoln Bicentennial at the Executive Mansion in Madison, Wisconsin. Locally, he is founder of "The Harmony Cornet Band " for Old World Wisconsin and also directs specialty music programs for Old World. He directs the St. Paul's Lutheran School Band in Fort Atkinson, and has inspired many 5-8th grade students to strive for musical excellence, as well as inspiring us "old students" at the PECB! Mr. Ed became a published author in 2014 with his "The Prairie Lawyer and the Clarinet Player: The Role of Music at the Gettysburg Address." He was named the "2014 Bandmaster of the Year" for his distinguished work by his colleagues of state-wide band directors at the annual banquet at the State Music Convention. Ed brings you Perry Como's "Christmas Dream" tonight.



# **Presenting our 2014 "HOLIDAY EXTRAVAGANZA"**

## **The Palmyra Eagle Community Band!**

Featuring the talents of: *Jim Neist and the "Kettle Moraine Blues"*

*The story telling artistry of Newel Thomas*

*and a special appearance by "Kim "KIMBIRDLEE" Fadner!*

*"Mr. Ed" Pierce, Director*

*All PowerPoint Presentations Created by Gina Neist*

### **Program**

**A Christmas Declaration**

**What Child Is This: A Fantasia for Band**

**Christmas Dream**

**A Skaters Waltz**

**Robert W. Smith**

**Vaughn Williams**

**Andrew Lloyd Webber**

**Emile Waldteufel**

**The Fabulous "Kimbirdlee"**

**All I Want For Christmas Is You**

**A Grown Up Christmas**

**I'll Be Home for Christmas**

**Mariah Carey**

**Foster & Thompson**

**Walter Kent**

*(With "Dr. BOB" Miller)*

**A Jazzy Christmas**

**Arr. Johnnie Vinson**

*(We Wish You A Merry Christmas, The Holly & the Ivy & Good King Wenceslas)*

### **Jim Neist Presents "The Kettle Moraine Blues"**

*A Holly Jolly Christmas, There is No Christmas Like a Home Christmas,  
Up on the Housetop, Hallelujah (with PECB)*

**Goin' Home or the Holidays**

**Reindeer Galop**

**'Twas the Night Before Christmas**

**Dvorak & Allen**

**Robert W. Smith**

**Moore & Bulloch**

*As told by Mr. Newel Thomas*

### **THE GRAND FINALE SING A LONG**

**Traditional**

*Santa Claus Is Coming to Town, Silver Bells*

*Rudolf the Red Nosed Reindeer, & Have Yourself A Merry Little Christmas (see insert)*

***Please stay for a reception of holiday goodies and  
meet & greet your friends & loved ones that make up  
your band....The Palmyra-Eagle Community Band!***

**DIRECTOR**

Ed Pierce

**VOCALS**

Kimbirdlee

**FLUTE**

Deb Gilbert

Kelley Haddon

Faustina Jones

Erika White

Melody Brady

Callie Lindemeyer

Pat McNamara

**CLARINET**

Nancy Bassett

Faye Brugge

Brenda Garrison

Warren Metzger

Dr. Jeff Olson

Ken Olson

Connie Sukowski

Carol Thomas

**SAXOPHONE**

Kristine Dexheimer

Ellie Hawes

Kelly Isaacsen

Paul Brady

**FRENCH HORN**

Jody Garber

Pattie Jaeger

Wendy Lucht

Gwenn Zerull

**TRUMPET**

Nancy Campbell

Sandi Hankowitz

Jeff Hawes

Jim Neist

Barb Sekula

Ethan Dexheimer



**BASS CLARINET**

Gina Neist

Kathy Sudbrink

**BARITONE**

Valerie Cole

Dusty Dusterhoef

Bob Miller

**TROMBONE**

Lisa Amacher

Chelsea Kienitz

Todd Kienitz

Sonja Pluess

Tom Stanley

Newel Thomas

**TUBA**

Jim Nelson

Wayne Craig

Mike Rubingh

**PERCUSSION**

Bernie Gilbert

Melodie Haddon

Elaine Ledrowski

Margo Kurth

## Christmas Pop Sing-A-Long Lyrics for Audience Sing-Along

### "Santa Claus is Coming to Town"

You better watch out  
You better not cry  
You better not pout  
I'm telling you why

Santa Claus is coming to town  
Santa Claus is coming to town  
Santa Claus is coming to town

He's making a list,  
Checking it twice;  
Gonna find out who's naughty or nice.  
Santa Claus is coming to town  
Santa Claus is coming to town  
Santa Claus is coming to town

He sees you when you're sleeping  
He knows when you're awake  
He knows if you've been bad or good  
So be good for goodness sake...

### "Silver Bells"

City sidewalks, busy sidewalks,  
Dressed in holiday style  
In the air  
There's a feeling  
of Christmas  
Children laughing  
People passing  
Meeting smile after smile  
and on every street corner you'll hear

Silver bells, silver bells  
It's Christmas time in the city  
Ring-a-ling, hear them sing  
Soon it will be Christmas day

Strings of street lights  
Even stop lights  
Blink a bright red and green  
As the shoppers rush  
home with their treasures

Hear the snow crunch  
See the kids bunch  
This is Santa's big scene  
And above all this bustle  
You'll hear

Silver bells, silver bells  
It's Christmas time in the city  
Ring-a-ling, hear them sing  
Soon it will be Christmas day

### "Rudolph the Red-Nosed Reindeer"

Rudolph the Red-Nosed Reindeer  
Has a very shiny nose  
And if you ever saw it  
You would even say it glows.  
All of the other reindeer  
Used to laugh and call him names  
They never let poor Rudolph  
Join in any reindeer games

Then one foggy Christmas Eve,  
Santa came to say,  
Rudolph with your nose so bright,  
Won't you guide my sleigh tonight?

Then all the reindeer loved him,  
As they shouted out with glee,  
Rudolph the red-nose Reindeer  
You'll go down in history!

### "Have Yourself A Merry Little Christmas"

Have yourself a merry little Christmas  
Let your heart be light  
From now on, our troubles will be out of sight

Have yourself a merry little Christmas  
Make the yule-tide gay  
From now on, our troubles will be miles away

Here we are as in olden days  
Happy golden days of yore  
Faithful friends who are dear to us  
Gather near to us once more

Have yourself a merry little Christmas  
Let your heart be light  
From now on, our troubles will be out of sight

Have yourself a merry little Christmas!